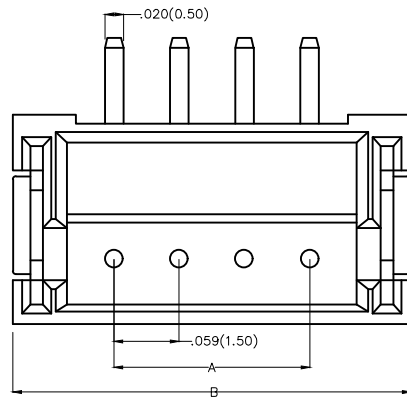


1 2 3 4 5 6 7 8

REV	LOCATIONS	DESCRIPTION	DATE	REVISER	APPD
1	△	MPQ: Change 1500 pcs into 1000 pcs/reel	20/DEC/23	KATE	LEO

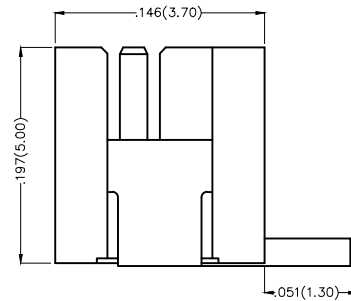
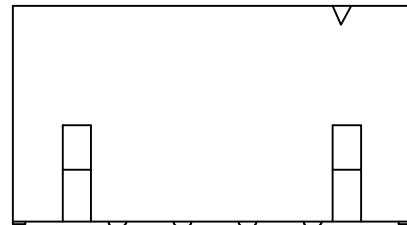


Electrical

Current Rating: 1.0A AC(rms)/DC  
 Voltage Rating: 50V AC(rms)/DC  
 Contact Resistance: 20 mΩ Max  
 Insulation Resistance: 500 MΩ MIN  
 Withstanding Voltage: 500V AC r.m.s  
 Temperature Range—Operating: -25°C~+85°C

Material and Plating

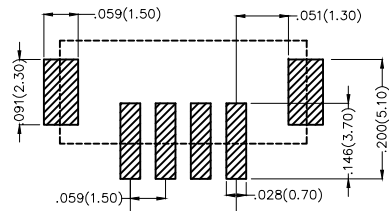
Housing: PA9T( UL 94V-0)  
 Contact Pin: Brass  
 Plating: Tin Plated



Ordering Information

FWF 150 05 - S XX S 2 4 W5 M  
 1 2 3 4 5 6 7 8 9 10

1	Category FWF—Wafer	2	Series Number 150—Pitch1.5mm	3	Distinction No. 05	4	Row Option S—Single Row	5	Circuits XX	6	Entry Angle S—180° Vertical
7	Plating 2—Tin Plated	8	Material—Resin 4—PA9T	9	Color—Resin W5—White	10	Packaging M—Reel				



Recommended P.C.Board Layout

 THIRD ANGLE PROJECTION	GENERAL TOLERANCES (UNLESS SPECIFIED)		APPROVE BY FRANK	DATE 8/JUL/13	PART NO. FWF15005-SXXS24W5M	ITEM NO. FWF15005	 Leader Of Industry
	DESIGN UNITS Inch (metric)	X.±.012(0.30) X.X±.008(0.20)	X'±5' .X'±2'	CHECKED BY JACOB	DATE 8/JUL/13	TITLE Wire to Board (Wafer) Pitch 1.5mm 180° Vertical (SMT)	
SCALE 5:1	SIZE A4	X.XX±.006(0.15) X.XXX±.004(0.10)	.XX±1' .XXX±0.5'	DRAWN BY CHERRY	DATE 8/JUL/13	THIS DRAWING CONTAINS INFORMATION THAT IS PROPRIETARY TO TXGA INDUSTRIAL ELECTRONICS(S.Z)CO.,LTD AND SHOULD NOT BE USED WITHOUT WRITTEN PERMISSION	

1 2 3 4 5 6 7 8



1 | 2 | 3 | 4 | 5 | 6 | 7 | 8

REV	LOCATIONS	DESCRIPTION	DATE	REVISER	APPD

A  
B  
C  
D  
E  
F

A  
B  
C  
D  
E  
F

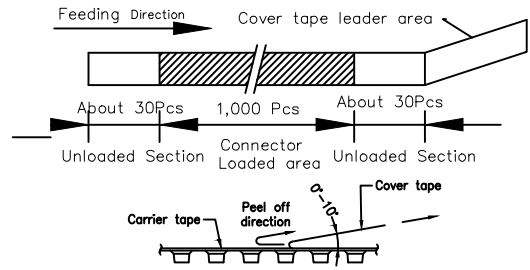
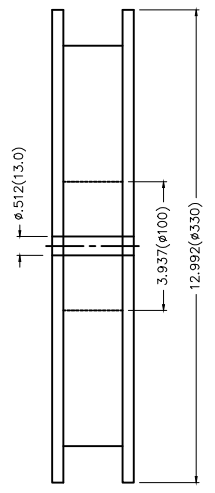
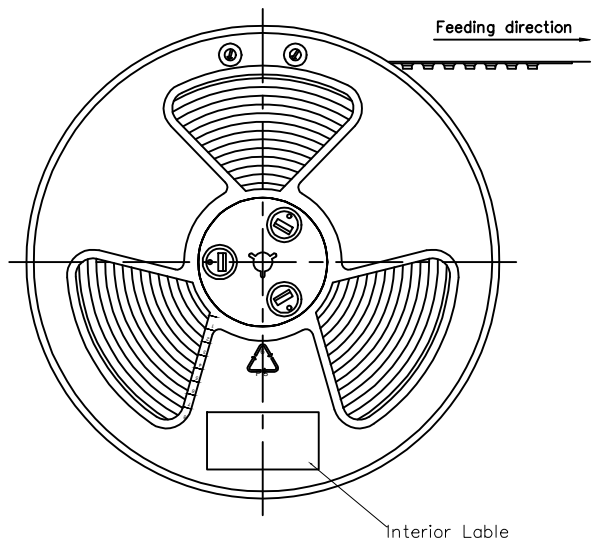
Circuits (n)	Part No.	Dimensions(in/mm)	
		A	B
2	FWF15005-S02S24W5M	.059(1.50)	.236(6.00)
3	FWF15005-S03S24W5M	.118(3.00)	.295(7.50)
4	FWF15005-S04S24W5M	.177(4.50)	.354(9.00)
5	FWF15005-S05S24W5M	.236(6.00)	.413(10.50)
6	FWF15005-S06S24W5M	.295(7.50)	.472(12.00)
7	FWF15005-S07S24W5M	.354(9.00)	.531(13.50)
8	FWF15005-S08S24W5M	.413(10.50)	.591(15.00)
9	FWF15005-S09S24W5M	.472(12.00)	.650(16.50)
10	FWF15005-S10S24W5M	.531(13.50)	.709(18.00)
11	FWF15005-S11S24W5M	.591(15.00)	.768(19.50)
12	FWF15005-S12S24W5M	.650(16.50)	.827(21.00)
13	FWF15005-S13S24W5M	.709(18.00)	.886(22.50)
14	FWF15005-S14S24W5M	.768(19.50)	.945(24.00)

 THIRD ANGLE PROJECTION	GENERAL TOLERANCES (UNLESS SPECIFIED)		APPROVE BY FRANK	DATE 8/JUL/13	PART NO. FWF15005-SXXS24W5M	ITEM NO. FWF15005	 Leader Of Industry	
	X.±.012(0.30)	X.±5'	CHECKED BY JACOB	DATE 8/JUL/13	TITLE Wire to Board (Wafer) Pitch 1.5mm 180° Vertical (SMT)			REV 1
	DESIGN UNITS Inch (metric)	X.X±.008(0.20)	.X'±2'	DRAWN BY CHERRY	DATE 8/JUL/13	THIS DRAWING CONTAINS INFORMATION THAT IS PROPRIETARY TO TXGA INDUSTRIAL ELECTRONICS(S.Z)CO.,LTD AND SHOULD NOT BE USED WITHOUT WRITTEN PERMISSION		
	SCALE 5:1	SIZE A4	X.XX±.006(0.15)	.XX'±1'				
		X.XXX±.004(0.10)	.XXX'±0.5'					

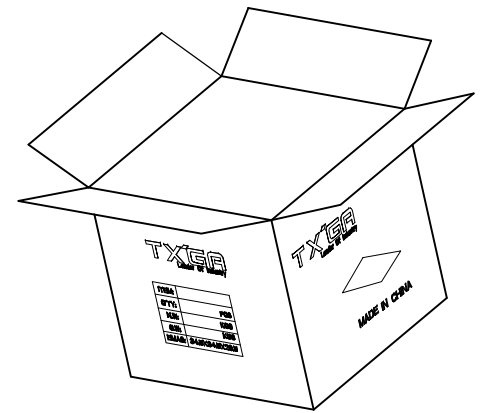
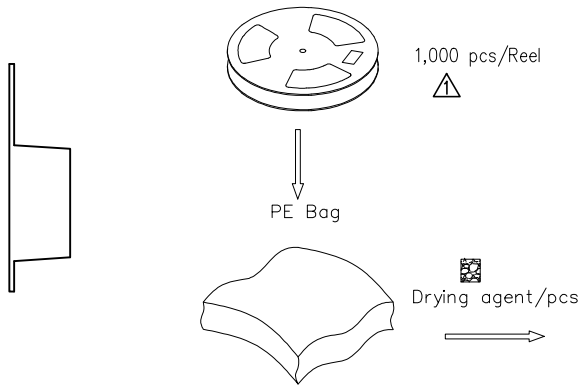
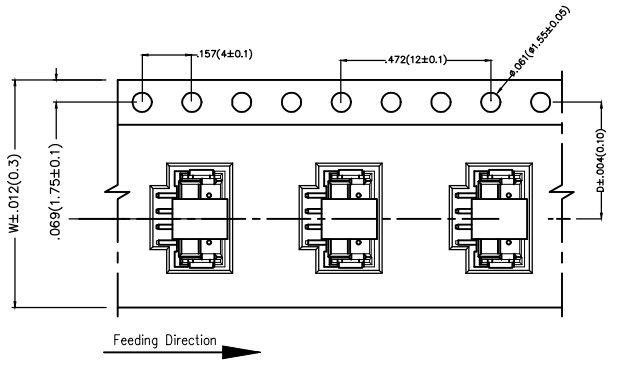
1 | 2 | 3 | 4 | 5 | 6 | 7 | 8

REV	LOCATIONS	DESCRIPTION	DATE	REVISER	APPD

- Note:
- 10 sprocket hole cumulative tolerance  $\pm 0.2$
  - Carrier camber is within 1.0mm in 100mm
  - Material: White Conductive polystyrene Alloy 100% recyclable
  - All dimensions meet EIA-481-3 requirements
  - Component load per 13" reel: 1,000 pcs  $\Delta$



Circuits (n)	Dimensions(in/mm)		Circuits (n)	Dimensions(in/mm)	
	D	W		D	W
2	.295(7.50)	.630(16.00)	9	.559(14.20)	1.260(32.00)
3	.295(7.50)	.630(16.00)	10	.559(14.20)	1.260(32.00)
4	.453(11.50)	.945(24.00)	11	.559(14.20)	1.260(32.00)
5	.453(11.50)	.945(24.00)	12	.559(14.20)	1.260(32.00)
6	.453(11.50)	.945(24.00)	13	.795(20.20)	1.732(44.00)
7	.559(14.20)	1.260(32.00)	14	.795(20.20)	1.732(44.00)
8	.559(14.20)	1.260(32.00)			



A  
B  
C  
D  
E  
F

A  
B  
C  
D  
E  
F

 THIRD ANGLE PROJECTION DESIGN UNITS Inch (metric) SCALE 5:1 SIZE A4	GENERAL TOLERANCES (UNLESS SPECIFIED) X.±.012(0.30) X.±5' X.X±.008(0.20) .X'±2' X.XX±.006(0.15) .XX'±1' X.XXX±.004(0.10) .XXX'±0.5'		APPROVE BY FRANK CHECKED BY JACOB DRAWN BY CHERRY	DATE 8/JUL/13 DATE 8/JUL/13 DATE 8/JUL/13	PART NO. FWF15005-SXXS24W5M TITLE Wire to Board (Wafer) Pitch 1.5mm 180° Vertical (SMT) THIS DRAWING CONTAINS INFORMATION THAT IS PROPRIETARY TO TXGA INDUSTRIAL ELECTRONICS(S.Z)CO.,LTD AND SHOULD NOT BE USED WITHOUT WRITTEN PERMISSION	ITEM NO. FWF15005 REV 1 SHEET NO. 3/3	 Leader Of Industry	